



P.O. Box 177
Empire, Michigan 49630

1995/1996, Vol.6, No.2

July 1995

DEAR ISLAND FRIENDS!!

COME ONE, COME ALL!!!!

SOUTH MANITOU ISLAND REUNION PICNIC

SATURDAY, JULY 29, 1995

12:00 NOON

EMPIRE TOWNSHIP HALL

SOUTH MANITOU MEMORIAL SOCIETY ANNUAL MEETING

SATURDAY, JULY 29, 1995

9:00 - 10:30 A.M.

EMPIRE METHODIST CHURCH

ANNUAL MEETING AGENDA:

Agenda for the Annual Business Meeting of the South Manitou Memorial Society to be held in the Social Area of the Empire Methodist Church on July 29, 1995 from 9:00 - 11:30 AM

1. Discussion of fund raising ideas to generate operating capital for special SMMS projects and activities which preserve and promote our mission.
2. Status report of current projects (SMI Cemetery, NMI Cemetery, Schoolhouse, Visitor Center exhibit). Kim Mann, National Park Liaison, will be available for questions.
3. Discussion of updated Memorandum of Agreement (MOA).
4. Brenda Williams from the University of Wisconsin will present a summary of her agricultural landscape report.
5. Proposed changes in By-Laws in Article III, Section 9, to read, ". . .biennially within thirty (30) days after current treasurer's term expires." Cindy Heisler will be contacted to advise the Board on this and discussion will occur at Meeting.
6. Continued discussion of formal inclusion of NMI into Society.
7. Election of Officers.
8. Agenda items from the floor.
9. Adjourn

NEWS FROM THE NATIONAL PARK

**4th Annual South Manitou
Island Outing**

Plan to join your fellow South Manitou Island Memorial Society members and friends on Sunday July 30, 1995 for the 4th Annual trip to South Manitou Island. We will meet at Leland Harbor by 9:00 a.m. to arrange for ticket purchase and park vehicles, etc. Bring along a picnic lunch and a raincoat or jacket (just in case).

We will attempt to visit everyone's favorite places on the island with special stops at the schoolhouse, cemetery, visitor center and lighthouse. A special discussion at the Schoolhouse will involve the Society's future involvement with restoration and exhibit display inside the building. Historic Architect, Kim Mann, National Park Liaison to the Memorial Society, will accompany us on our tour. We will also take some time to gaze at the beauty of the newly finished Cemetery perimeter fence. Kim Mann will give us a tour of the Lighthouse and the Visitor Center, where we will also discuss the possibility of exhibit space for the Society.

We will return to Leland at 5:30 p.m. I have made a group reservation, with additional space available. Please call the ferry boat office at 616-256-9061 to reserve your ticket. Please tell them you are with the South Manitou Memorial Society group. Sound Fun? We hope to see you there!!!

Kathy Bietau

**SOUTH MANITOU MEMORIAL SOCIETY
T-SHIRTS BEING DESIGNED**

Society Member, Judy Fogle, and the Society Board Officers are currently working on producing Memorial Society T-shirts, sweatshirts and hats. They hope to finalize plans and be ready to take orders for these items at the Annual Meeting and Picnic.

The Memorial Society and the Park have gotten off to a good start this year in stabilizing gravesites on North and South Manitou Islands. Memorial Society Members Paul Rocheleau, Kathy Bietau, and Paul Maleski went to North Manitou Island on May 16th to place two crosses on the gravesites at the Maleski Farmstead. The group also did a short video oral history of Paul talking about the farmstead while at the site.

The Memorial Society and Huron-Valley Group-Sierra Club assisted the park in placing two crosses in the NMI Cemetery for John and Nicholas Feilen. The wooden grave markers had been worn away by the weather, and the new cement crosses will last for a long time to come. The group also helped identify and flag existing sites for future placement of crosses, as family members are contacted. Material was also collected to stabilize and rebuild fences around family plots in the cemetery.

The Memorial Society and Muskegon Hiking Club reinstalled the cemetery fence on South Manitou Island the week of June 12-16, 1995. A number of Memorial Society members were present to offer assistance with the Muskegon Hiking Club.

The Cultural Landscape Team for the Lighthouse HSR was also present on SMI the week of June 12-16th. Land and Community of Charlottesville, Virginia was on site collecting data on the land features, site improvements, and vegetation that make up the Lighthouse complex.

Land and Community Team Members Tim and Gennie Keller, utilized the presence of the SMI Memorial Society Members to ask questions about the history of the complex and the families associated with it. Photographs provided by the Memorial Society were also helpful in identifying features no longer visible or existing on site.

(cont'd next page)

Thanks Judy!!!!

The first draft report of the SMI Agricultural History Report was reviewed by park staff in May. Graduate student Brenda Williams, will provide a presentation to the Memorial Society during the July Annual Meeting and Picnic.

Kim Mann
Sleeping Bear Dunes N.L.

SOUTH MANITOU MEMORIAL SOCIETY
BOARD MEETING
MAY 12, 1995 - BALDWIN,
MICHIGAN

Minutes:

Present: Kathy Bietau,
Margaret Braden, Zella Morris,
Paul Rocheleau
Absent: Sandra Black

I. OLD BUSINESS

A. The Volunteer Service Agreement for South Manitou Memorial Society projects was signed by Kathy; copies distributed.

B. Written approval for all Board members for fencing material expenditures was given by Zella.

C. Betty Kramer Collection update: Johanna de Kok has been helping Laura Quackenbush at the Leelanau Historical Museum with the preservation efforts; help is still needed.

II. NEW BUSINESS

A. Memorandum of Agreement (MOA). The proposed draft of the MOA with the National Park was perused; questions arose regarding Articles V and VII. Amendments will be drafted and submitted to Ivan Miller, Superintendent, for his approval.

B. Expenditures
1. Paul reported an expenditure of app. \$60.00 for

materials are being stored at the Park now, and will be delivered to the construction site before June 12. Several members of the Society have volunteered to help with the construction during the week ... Yea!

C. Cultural Landscape Report

Contracting representatives from the Land and Community Group will be on SMI during the week of June 11-17 gathering data for the Cultural Landscape Report of the Lighthouse complex.

D. Income

Zella reported on the new memberships; discussion ensued on methods of generating income. Margaret and Zella will investigate and report. Patty Siegrist, Burdick descendent with accounting skills and tax expertise, will be asked for advice on how to handle and proceed with this.

E. Nominating Committee

The purpose of this committee will be to recommend a slate of officers in writing by June 15 to Kathy Bietau for publication in the newsletter. At least one nomination for each office is required; nominations will be accepted from the floor at the annual meeting on July 29. Margaret offered to pick up the mail in Empire, so the candidates for treasurer and secretary don't necessarily have to live nearby.

III. OTHER BUSINESS

A. Membership Lists

Judy Fogle maintains a current membership list. Kathy will arrange to have an updated list distributed to the Board Members.

B. Newsletter Deadline

Deadline for Newsletter items is June 15.

C. Annual Meeting agenda items will include the following:

(please reference front page on this Newsletter).

IV. ADJOURN

cross materials and plaques for the sites on NMI. He'll prepare and submit an itemized statement for reimbursement.

2. The original receipts and documents for the SMI cemetery fencing materials was given to Zella. The

SOUTH MANITOU ISLAND
AGRICULTURAL HISTORY REPORT

Brenda Williams, graduate student from the University of Wisconsin at Madison, will be hosting a program detailing her research into the agricultural history of South Manitou Island. She will show slides and present her recently completed report.

Brenda met many of you at last years Picnic, formed friendships with her and assisted her with some of the research she will be presenting. The program location will be announced at the annual meeting and picnic. It will be Saturday July 29 at 7:00 p.m. in the Empire area. You are all cordially invited to the presentation. Please make plans to attend!

ELECTION OF SOCIETY OFFICERS

As you know, all Board Offices are up for re-election at this years annual meeting. President Paul Rocheleau solicited interest from our membership in the previous newsletter. However, no one responded to Paul. If you were contemplating volunteering for one of the four board positions ... contemplate no longer. We need you now! Please contact Paul at 517-773-3595 with your nominations before the annual meeting on July 29. Nominations will be accepted from the floor as well. Margaret Braden and Paul have volunteered to serve another term, however, we are in need of volunteers to accept the treasurer and secretary



"Smiling and Building the Fence"
South Manitou Island Cemetery

positions. Help keep the light
of our Society burning bright!

THOSE WE WILL MISS
ANTHONY JOHN KIELENSKE

Anthony John Kelenske, 82, of
Traverse City, died May 25,
1995.

He was born on North Manitou
Island on May 29, 1912, to
Peter and Eda (Anderson)
Kelenske. When he was a young
child, the family moved to
Traverse City, where he had
lived since. In 1937 he
married Leona Marie Attinger.
Some of you may have known him
and many will miss him.

NORTH MANITOU ISLAND GRAVES SITES MEMORIALIZED

On May 16, 1995, Paul Maleski, Jr. returned to his family farmstead on North Manitou Island to memorialize two family members who were born and died on the family farm. Paul Rocheleau and I joined Paul Maleski on the outing.

We made a "quick trip" to the island, aboard the National Park Service vessel, WILLIAM M. BURTON, captained by Dave Wilkins. While on the island, we were kindly assisted by Roads and Trails crew members; Lee Evans, George Henderson and Kevin Kelly. White cross grave markers were placed on the following graves: Adam Maleski (Paul's twin brother) born and died April 26, 1921, and Frank Maleski, born and died circa 1925, early summer. Both brothers were stillborn. Paul remembers the memorial ceremony they had for brother Frank under the pear tree northeast of the home. The entire family gathered around while his father recited some kind words in a small private ceremony. Paul remembers his mother crying while they laid her son to rest on an early summer day.

And so, 70 years later, on a similar early summer day, the South Manitou Memorial Society placed permanent gravesite markers on Adam and Frank Maleski graves. We then spent the afternoon rambling around the farm listening to stories about life on the Maleski farm and North Manitou Island. Paul spent the first 21 years of his life on the island. He shared with us his family history, adventures of a young boy on the island and memories of 21 years on North Manitou. We had a GREAT time!

Thanks to Paul Rocheleau for making the beautiful crosses with gold plate inscriptions. Thanks also to Glenn Furst for teaching Paul "the tricks of the trade" of manufacturing crosses and for his inspiration. A special thanks to Kim Mann for assisting the Memorial Society with this successful project.

- Kathy Bietau



"Paul Maleski, On family farm, North Manitou Is.

SOUTH MANITOU ISLAND CEMETERY FENCE

After years of thinking about it and months of planning for it, the South Manitou Island Cemetery fence is now completed. On June 13 and 14, representatives from the Memorial Society, the Muskegon Hiking Club, and the National Park Service hauled posts and rolls of fencing, strung string, dug postholes, pounded same, trimmed and hauled brush, trimmed trees and stapled the fence. Did you know that there are multiple varieties of juniper? And poison ivy can be 2-10 inches high at this time of year? And Lake Michigan feels very cold but refreshing after a hard days labor? Everyone on the work crew found the niche which suited their talents and strengths: Sue handled the fence rolls; Patty, Robin and Warren leveled and secured the posts; "Tool Time" Kathy handled the power trimmers; Paul, Ryan and Carl handled the power auger. The list goes on and on. The weather gods cooperated by blessing us with dry, warm days to finish our work which really was a labor of love for those of us who know the history of those who are buried there. Our sincerest thanks to Memorial Society members Kathy Bietau, Duke Fogle, Patty Siegrist, and Robin Tilwick; Muskegon Hiking Club members Gwen Glatz, Rich Nelson, Warren McFarran, Sue LaVigne, Carl Pitcher, and Jeff March; National Park Service employees Island District Ranger Chris Johnson, Ranger Pat Schad, Intern Ryan Kunisch, and Historic Architect Kim

Mann, who arranged a great cookout on June 14, and indeed was the guiding force for this project. The area now is well-defined with a fence that is historically accurate. It looks tended and cared for, as are the memories created by the families represented there. Come and see ... sit under the shade trees ... bring Glenn's book or Myron's or Charlie's ... or tell stories you know to those who don't. Come and see ... it's a wonderful place.

- Paul Rocheleau & Margaret Braden



"The Cemetery fence building crew"

- This poem was written into the guest log at the Visitor Center on South Manitou -
 - I really enjoyed it and hope you do too ... thanks Nancy!!!

Ode to South Manitou

What is this place called Manitou
 Where a village once did lie
 A place of fields and forests
 And sand dunes meet the sky

Once a busy harbour
 With Steamships passing by
 Once a peaceful village
 Where people lived and worked and died

Above the village and the harbour
 With its beacon burning bright
 Stood the South Manitou Lighthouse
 Keeping watch both day and night

When technology changed things
 And the steamships came no more
 People started to move away from
 South Manitou's beautiful shore

The fields gave into the forest
 The farm machinery taken by rust

The memory of a whole village
Has crumbled into dust

What is this place of solitude
That means so much to me
South Manitou is there
When I need to feel free

I'd like to talk to the spirits
As they wander about at night
And ask them what life was like here
When the lighthouse beacon burned bright

The lighthouse is still standing
Though it's beacon no longer bright
It stands like a mournful monolith
A lonely creature in the night

When my life is ended
And it's bidding has been done
Let me run aground upon her shoals
And rest there in the sun

I'll join the many ships
That have stranded off her shore
And the old South Manitou Lighthouse
Will watch over me ever more

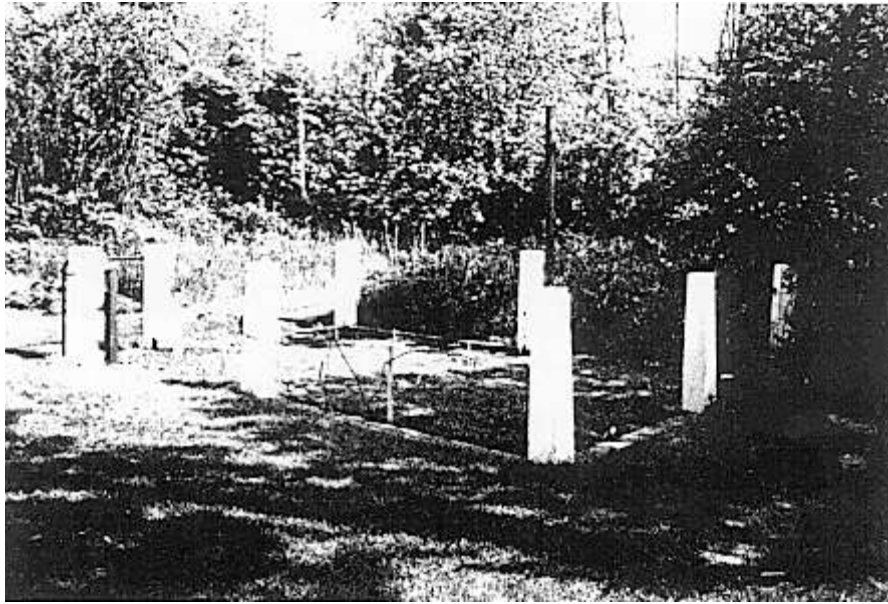
BY

Nancy Jeltoma
Kentwood, MI
8-24-94

SOUTH MANITOU ISLAND

U.S. LIFE SAVING STATION GARDEN RESTORED

She's a beauty!! Thanks to Jack Hughes, South Manitou Memorial Society member and National Park volunteer. Jack sweat, toiled and labored to bring the historic garden back to life again! He dug, weeded, exposed the cement perimeter foundation, painted the cement posts and even planted a variety of vegetables and flowers! The remaining cemetery fencing will be used to surround the garden and keep those "fat island hares" from beating the islanders to the harvest. We appreciate your hard work, Jack, thanks a bunch!!



Copyright 1995/1996 Vol.6, No.2

SOUTH MANITOU MEMORIAL SOCIETY
P.O. Box 177 Empire, Michigan 49630

Membership Application:

Name: _____ Date: _____

Address: _____

City/State/Zip: _____

Donation:

\$100.00 \$50.00 \$25.00
 \$10.00 OTHER

The SMMS is a non-profit organization. Contributions are tax-deductable to the extent allowed by law.